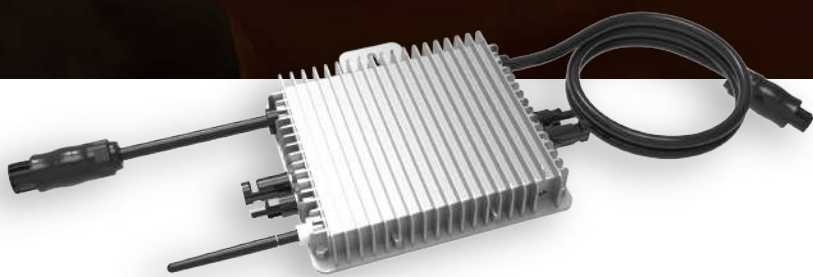


# Microinverter



IP67 protection degree, 10 years warranty



Zigbee or WIFI communication



Support reactive power compensation



2 MPP trackers, module level monitoring



Rapid shutdown function

# Technical Data

Model		SUN600G3-EU-230			
<b>Input Data (DC)</b>					
Recommended input Power (STC)	210~420W (2 Pieces)				
Maximum input DC Voltage			60V		
MPPT Voltage Range			25~55V		
Full Load DC Voltage Range (V)	24.5~55V				
Max. DC Short Circuit Current			2×19.5A		
Max. input Current			2×13A		
No.of MPP Trackers			2		
No.of Strings per MPP Tracker			1		
<b>Output Data (AC)</b>					
Rated output Power	600W				
Rated output Current	2.6A				
Nominal Voltage / Range (this may vary with grid standards)	230V/ 0.85Un-1.1Un				
Nominal Frequency / Range			50 / 60Hz		
Extended Frequency / Range			45~55Hz / 55~65Hz		
Power Factor			>0.99		
Maximum units per branch	8				
<b>Efficiency</b>					
CEC Weighted Efficiency			95%		
Peak Inverter Efficiency			96.5%		
Static MPPT Efficiency			99%		
Night Time Power Consumption			50mW		
<b>Mechanical Data</b>					
Ambient Temperature Range			-40~65		
Size (mm)			212W×230H×40D (Without mounting bracket and cable)		
Weight (kg)			3.15		
Cooling			Natural cooling		
Enclosure Environmental Rating			IP67		
<b>Features</b>					
Compatibility			Compatible with 60~72 cell PV modules		
Communication			WIFI / Zigbee		
Grid Connection Standard			VDE4105, IEC61727/62116, VDE0126, AS4777.2, CEI 0 21, EN50549-1, G98, G99, C10-11, UNE217002, NBR16149/NBR16150		
Safety EMC / Standard			UL 1741, IEC62109-1/-2, IEC61000-6-1, IEC61000-6-3, IEC61000-3-2, IEC61000-3-3		
Warranty			10 years		